



## Points of interest

Conegliano

Routes & Tours



### A passeggio tra storici camminamenti e palazzi signorili

via dei Pascoli | Conegliano

Tour of the ancient walls in Conegliano.

From the parking of the structure named "Villa Canello", follow the "Porta del Soccorso" path to the castle of "Conegliano" city, passing through the door, then descend on "Madonna della Neve" road where the imposing walls overlook and enter the city alongside the convent of Saint Francis.

Go along to "Giambattista Cima" street where is the birthplace of the famous painter and arrive in "Cima square", the central nucleus of the locality of "Conegliano" in front of the "Accademia" Theater. Go along the street next to the theatre to reach "Porta Leone" and here you turn onto "via Scoto de Scoti", formerly "calle degli Asini", which runs alongside the "Annunziata" oratory.

Once again at the castle, retrace the outward stretch in the opposite direction, returning to "Villa Canello" place.

Walking time: 1h 30'

Distance: km 2,9

Height difference: m 144



### Il Filo della Storia

Via XX Settembre, 132 | Conegliano

Pedestrian tourist route in the historic centre of Conegliano.

Il Filo della Storia is a pedestrian itinerary in the historic centre of Conegliano, conceived and promoted by the Lions Club of Conegliano to better know the city. Twenty-four information panels in Italian and English are positioned in correspondence with as many points of interest, to accompany visitors on a pleasant walk of about four kilometers. To walk the Filo della Storia, just follow the brown line drawn on the streets of the centre.

#### Opening hours

Every second and fourth Sunday of the month, from 10.00 am to 12.00 pm, guided tours are provided along the route, with a participation fee of € 5 per person (for information and reservations, contact the IAT Office at 0039 0438 21230 or send an e-mail to [iat@comune.conegliano.tv.it](mailto:iat@comune.conegliano.tv.it)).

Mareno di Piave

Routes & Tours



### Un facile anello nelle campagne marenesi

Piazza Municipio | Mareno di Piave

Between the Monticano and the Oasis of Campan.

From the town hall of "Mareno di Piave" village you walk up to the church of "SS. Pietro e Paolo" and then head to the hamlet of "Soffratta". Entering the open countryside, follow the "Monticano" course embankment for two kilometres, observing "Villa Montalbano Balbi Valier Paoletti" (17th century) and then enter the "Guadon" nature trail, before reaching the location of "Oasi Campagnola" where there is a small lake with accommodation facilities. From "Villa Wiel", now called "Dall'Armellina" (19th century), the tour is completed along "Conti Agosti" Street.

Walking time: 3h

Distance: km 11,2

Altitude difference: m 15

Moriago della Battaglia

Routes & Tours



## Passeggiata a Mosnigo - I Palù

Moriago della Battaglia

Naturalistic itinerary in the Palù area in Mosnigo (Moriago della Battaglia).

The itinerary starts from the church of Mosnigo, which dates back to 1590. Leaving the church behind, continue along via Chiesa, turn right into via Don Tarcisio Salton and right again into via Todoverto to get, crossing country roads, to the Palù park. The Palù area is a natural park, unique of its kind, made up of vegetable fences, called closed fields, where there are alders, oaks, willows, hazelnuts and plane trees. The area was reclaimed in the 14th century by the Benedictine monks, then followed by the Cistercians and the Camaldolese. After about 200 meters, turn right at the crossroads, continue to an ancient wash house and, keeping to the left, continue towards Col San Martino. Following the same route you return to the starting point.

This itinerary can be carried out throughout the year, is suitable for everyone and lasts about an hour, depending on the chosen routes.

Refrontolo

Routes & Tours



## Passeggiata a Refrontolo

Piazza Vittorio Emanuele, 1 | Refrontolo

(0039) 0438 978103

protocollo.comune.refrontolo.tv@pecveneto.it

<https://www.comune.refrontolo.tv.it/hh/index.php?jvs=0&acc=1>

Walk in the village of Refrontolo, among the panoramas of the Treviso Pre-Alps and the Prosecco hills.

Leaving the car in the new square of Refrontolo, near the town hall, you can walk along the pedestrian path, following the signs for the "Tempietto Spada". In this way you reach the small hill of the temple from which you can admire the setting of the Treviso Pre-Alps. Continue along the small road that descends again towards the center of the town, passing by the parish church of Santa Margherita, which houses some suggestive altarpieces, including one from the School of Paris Bardon. Continuing in the direction of the square, you go along the ancient barchessa Spada. To complete the visit, you cannot miss a stop at Molinetto della Croda, which can be reached on foot or by car (about 1.6 km). The Molinetto, dating back to the first half of the 1600s, is still in operation and can be visited inside.

The walk takes about an hour and is suitable for everyone (some sections are uphill).

San Fior

Routes & Tours



## Alla scoperta del castello che non c'è

Piazza G.Marconi | San Fior (TV)

"Castello Roganzuolo" trail.

From "Marconi" square in hamlet of "San Fior" we cross the "Rimembranza" Park and then follow "Serravalle" street to "Borgo Canè" where the structures of "Villa Soldi - Cadarin" and "Villa Garbellotto" overlook.

Once on "Rividella" street, you enter in open countryside until you reach "Villa Morosini Lucheschi Valforte". Later, we visit the small village of "Borgo Gradisca" and, after a passage through vineyards and olive groves, we reach the hill of the hamlet of "Castello Roganzuolo". The return to the village of "San Fior" takes place "via Serravalle" street and a short final detour to the parish church of Saint John the Baptist.

Walking time : 2h 30'

Distance : km 8,5

Altitude difference : m 166

San Pietro di Fieletto

Routes & Tours



## Passeggiata a San Pietro di Feletto

Via Roncalli, 1 | San Pietro di Feletto  
(0039) 0438 486817  
protocollo@comune.sanpietrodifeletto.tv.it

Walk in San Pietro di Feletto, following the course of the Crevada stream. The walk starts from the square of the Pieve of San Pietro, where you can see an illustrative board of the routes. Going down towards the Crevada stream, towards the south, you cross the suggestive and interesting Val Trippera, an area rich in caves and natural caverns, until you reach the territory of Refrontolo. At the height of the ruins of the former Molino Crevada, go up towards Borgo Anese, an ancient court of houses of great charm. The toponym recalls those who still worked wool in the 14th century. The oratory is dedicated to San Giovanni Battista, the patron saint of wool workers. Continue over the provincial road towards Borgo Castagnè, pass by Borgo Frare and return to the San Pietro Square, where you can relax in a quiet park with children's playground and picnic area. A branch goes up from the stream towards Borgo Frare, creating a shorter hiking ring. The walk lasts about an hour and a half.



## Sentiero Papa Giovanni XXIII

Via Roncalli, 1 | San Pietro di Feletto  
(0039) 0438 486817  
protocollo@comune.sanpietrodifeletto.tv.it

4-kilometer route in the hills of San Pietro di Feletto.

Opened in 2019, this short trail unfolds in the hills of San Pietro di Feletto. It is dedicated to Pope John XXIII, who as a young man loved to come to the Feletto territory for his summer holidays and who walked here among chestnut trees, hornbeams and vines. The path starts from the Antica Pieve, near which stands the Villa Patriarcale, where the future Pope resided during the periods of his stay in the village, and then descends along via Roncalli and towards the Roccolo. The itinerary continues in the green hills, letting you admire the ridge of Manzana and the hill of Formeniga, on whose top stands the church of San Pancrazio. In the background, from left to right, the hills of Tarzo and Vittorio Veneto with the Treviso Pre-Alps in the background: Col Visentin, the cut of Val Lapisina, Monte Pizzoc and Cansiglio. Towards the east, then, the eastern Veneto and Friuli plains extend. It is a rural landscape, in which a network of vineyard crops alternates with patches of wood and small villages, connected by roads that climb up the hills. One of these is the famous Muro di Ca' del Poggio, a demanding climb, known internationally in the world of cycling, near which the path of Pope Giovanni XXIII continues along the "100 steps" route, a prelude to the return of the path to the start point.

The itinerary is marked by specific signs.

## San Vendemiano

## Routes & Tours



## Ciclopedonale di San Vendemiano

Via Vecchia Calpena | San Vendemiano (TV)

Bicycle and pedestrian path along the stream.

The journey begins from Via Vecchia Calpena, hidden among the undulations of the hills, to discover the picturesque country paths that intersect between Villa Maresio Gera Amadio and Villa Lippomano. From here, the route continues along the bank of the Crevada stream, a place of great importance in terms of nature and landscape.

We follow the course of the stream along the Saccon - San Vendemiano cycle path, crossing the entire centre. This road eventually takes us to Provincial Road 15 Cadore-Mare.

The conclusion of this route is in the quiet hamlet of Saccon, which lies on the border with Mareno di Piave. The final point is the Church of San Felice, famous for hosting a work entitled 'The Last Supper', which is now preserved in the museum of the Conegliano Castle.

Time: 2.15 hours  
Distance: 7.4 km  
Height difference: m 48

## Santa Lucia di Piave

## Routes & Tours





## Camminando tra storia e natura a Santa Lucia di Piave

Via Francesco Crispi, 35 | Santa Lucia di Piave (TV)

The "Three Waters" trail.

From "Palazzo Ancilotto" in the locality of "Santa Lucia di Piave", you reach the parish church passing through the town hall, then take the cycle-pedestrian path of "via Foresto" and then reach the fraction of "Saranno" at the church of "San Martino".

Following the "Crevada" street embankment, you arrive at the location "Three Waters", the junction point for the "Crevada" street, "Ferrera" street and "Monticano" river course.

After the industrial area, at the "Pavoni" roundabout, follow "Via Martiri della Libertà" where "Villa Corner Campana" faces and then return to the hamlet of "Santa Lucia di Piave" via the exhibition center.

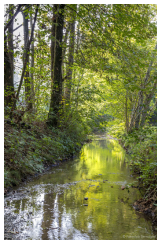
Walking time: 2h 30'

Distance: km 8,7

Altitude difference: m 16

## Sernaglia della Battaglia

## Routes & Tours



### I Palù del Quartier del Piave

Via Busche, 101 | Sernaglia della Battaglia

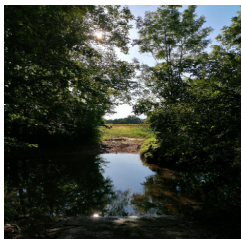
Area of Palù del Quartier del Piave.

The area, covering about 1,000 hectares, between the municipalities of Sernaglia, Moriago, Vidor and Farra di Soligo, recalls the ancient presence of a marshy area with the place-name Palù.

The marshes, which were transformed into meadows, delimited by ditches and perimeter hedges as windbreaks following reclamation in the Middle Ages, allow the area to be used for the production of fodder, timber and firewood.

The Palù is one of the best-preserved areas of enclosed fields in Veneto and northern Italy: orchids and irises bloom in the wet patches, while the hedges and woodlands are home to examples of native oak and English oak.

The municipality, in collaboration with the Veneto Region and Gal 4, has set up guided ecological routes to be followed on foot, horseback or mountain bike through the whole area of the Palù del Quartier del Piave.



### Percorso ecologico Fontane Bianche

Via Fontigo, 37 | Sernaglia della Battaglia

Ecological nature trail.

The area of the Fontane Bianche ecological route covers more than 100 hectares and from a geomorphologic point of view is located just above the confluence of the Soligo river, the last tributary of the Soligo before the Piave flows into the Veneto plain below.

Le Fontane, which are located at the mouth of the Piave riverbed of the Rabòs and Rospér territories, its penultimate tributaries, are separated from the Soligo by the rocky shoulder on which Falzè di Piave stands.

The Legambiente club in Sernaglia della Battaglia has taken over a 26-hectare plot of land in the heart of the Fontane Bianche area, which has been granted a concession by the Treviso Civil Engineers.

A nature trail has been set up inside the wood, where it is possible to admire the most evocative corners of this place, such as the Osservatorio (Observatory) and the Penisola delle Volpere (Volpere Peninsula) and study the many different flora and fauna species present.



### Sentiero delle Volpere

Falzè di Piave TV

Naturalistic itinerary in Falzè di Piave (Sernaglia della Battaglia).

The "Volpere" naturalistic trail, improved by the Legambiente Sernaglia's volunteers, starts in "Passo Barca", locality of Falzè di Piave, and runs along the course of the Piave river up to the confluence with the "Fontane Bianche" and then along the foot of the escarpment. The distinctive natural feature is definitely the suggestive wall of conglomerate, a sedimentary rock formed from heterogeneous pebbles held together river floods, is easily eroded by water, creating natural caves of considerable size. The latter provide a shelter for many animals, including foxes ("volpi" in Italian), as the Toponym itself reminds us.

The importance of the site is also due to the presence of Mesolithic settlements, proved by the discovery of stone products from that time. The area has a deep historical value even in more recent

times, thanks to the "Passo Barca", a connection point between right and left riverbanks, operative until the 70s, and the "Porto delle Zattere", an essential stopover to change the rafters' crew. Along the trail you will find fantastic creatures such as the Matharol, elf of the forest, and the Anguane, water-related feminine creatures with zoomorphic features, mythological personification of natural phenomena.

The route is very simple, also suitable for families with children, but overall it has a length of 11 km, as it combines two different routes. To shorten the length, the two paths can be done in two different walks.

#### **Opening hours**

The route can be done throughout the year.

Susegana

Routes & Tours



### **Passeggiata tra due castelli**

Via S.Salvatore 13 | Susegana (TV)

Walking route between San Salvatore Castle and Collalto Castle.

Starting from the car park adjacent to the Chiesa dell'Annunciata, which is located in the heart of Susegana, we take the path along Via Sottocroda. This initial route, which is mainly flat and approximately 2 km long, leads directly under the imposing San Salvatore Castle. We then proceed until we reach the picturesque hamlet of Collalto, known for its impressive castle.

Beyond this point, the route evolves, presenting various changes in altitude through ascents and descents. It then plunges into nature, passing through dense forests and green meadows that offer a sense of peace and tranquillity.

The last section of the journey leads back to the Castle of San Salvatore, which we had previously sighted. From here, we head back to the starting point, thus completing an exciting and fascinating hike.

Duration: 3h

Distance: 13 km

Height difference: m 300